

MXT 4.0



MXT 4.0

PROVIDES EASY CHARGING FOR 24 V BATTERIES

The MXT 4.0 is a cost-effective charger, suitable for smaller 24 V batteries. The MXT 4.0 is ideal for maintenance charging of larger fleets with 24 V vehicles, backup systems, piste machinery and wheelchairs, etc. The MXT 4.0 is equipped with all necessary features and functions to solve a broad range of battery related problems. It offers features such as battery diagnosis that shows if a battery can receive and retain a charge, a special reconditioning function that restores stratified and deeply discharged batteries, unique maintenance charging, a mode for optimised charging during cold winter days and the charging of demanding AGM batteries (i.e. Optima).

The MXT 4.0 is a fully automatic 8-step charger that delivers 4 A to 24 V batteries from 8-100 Ah and is suitable for maintenance charging up to 250 Ah. The charger is IP65 classified (splash and dust proof) and compatible with the electronics of a vehicle. It is non-sparking, reverse polarity protected and short-circuit proof. The MXT 4.0 is delivered with a 2-year warranty.



Fully automatic for optimal charging



For all lead-acid batteries



Fully charged battery
Maintenance charging



For charging in cold conditions and AGM batteries



Recondition of deeply discharged batteries

RECOMMENDED FOR



MXT 4.0

INCLUDED

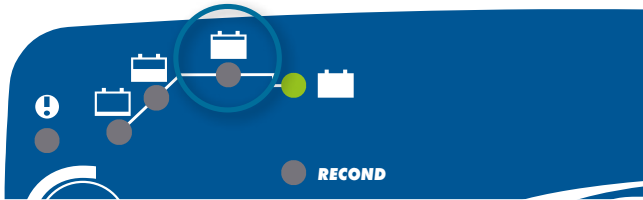
CTEK COMFORT CONNECT-eyelet M8



CTEK COMFORT CONNECT-clamp

- Water-resistant so that the solution could be taken to the problem even if it rains or snows.
- Patented maintenance charge for a unique combination of maximized life and performance.
- Recondition of deep discharged batteries.
- Patented desulphation that extends the battery life.
- No sparks, short-circuit proof and reverse-polarity protected for untroubled usage.
- Automatic detection of end-of-life batteries that eliminates surprises.

READY TO USE



The table shows the estimated time for empty battery to 80 % charge.

BATTERY SIZE (Ah)	TIME TO 80 % CHARGED
10	2 h
20	4 h
50	10 h
100	20 h

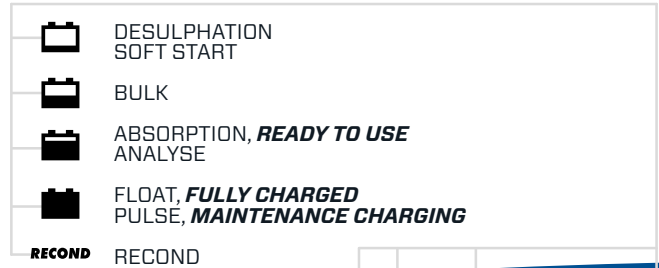
GUARANTEED QUALITY WITH CTEK

CTEK customer support is available to answer any questions related to charging and CTEK chargers. Safety, simplicity and flexibility characterizes all products and solutions developed and sold by CTEK.

CTEK supply chargers to more than 70 countries throughout the world. CTEK is also a reliable OEM supplier to many of the world's most prestigious car and motorcycle manufacturers.

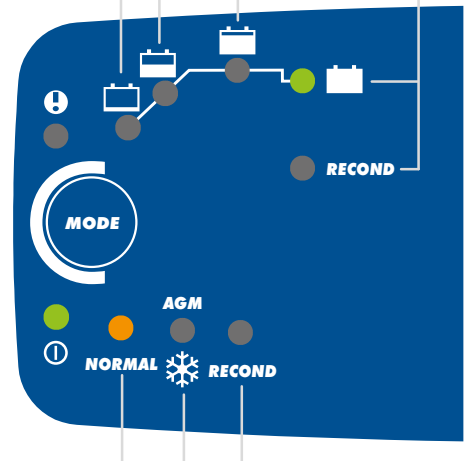
For more information visit WWW.CTEK.COM

CTEK CHARGING



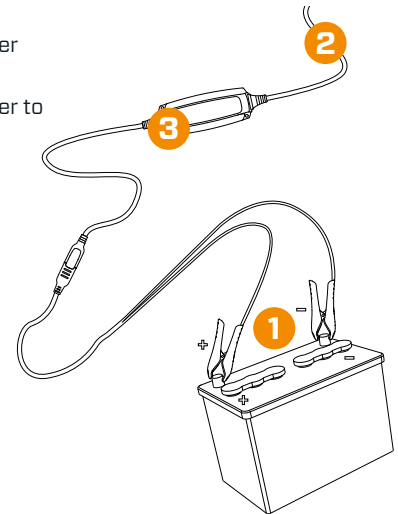
PROGRAMS

NORMAL	4 A/28.8 V
AGM	4 A/29.4 V
RECOND	1 A/31.4 V



CONNECT AND CHARGE

- 1 Connect the charger to the battery
- 2 Connect the charger to the wall socket
- 3 Press the Mode-button to select charging program



TECHNICAL DATA

CHARGING VOLTAGE	28.8/29.4/31.4 V
CHARGING CURRENT	Max 4 A
TYPE OF CHARGER	8 step, fully automatic charging cycle
TYPE OF BATTERY	24 V lead-acid batteries
BATTERY CAPACITY	8-100 Ah, up to 250 Ah for maintenance
INSULATION	IP65 (splash and dust proof)
WARRANTY	2 years

Experts in Brand Distribution

Saxon

Everland Road, Hungerford, Berkshire, RG17 0DX, UK
 Tel: 01488 689 400 | Fax: 01488 684317
info@saxon-brands.com | www.saxon-brands.com

